

LONG BEACH

MAURITIUS

A CONTEMPORARY AND VIBRANT
HOLIDAY EXPERIENCE

SEASON 2025-2026



Long Beach, a five-star resort on the pristine shores of Belle Mare, redefines tropical luxury with a modern and dynamic flair. A haven for adventurous spirits and seekers of the extraordinary, the resort is home to 255 meticulously designed rooms, a biodiversity trail and an infinity pool.

- Over 1 km of **white sandy beach**
- Perfect spot for **magical sunrises**
- Complimentary unlimited Green Fees at **Ile aux Cerfs Golf Club** and **Anahita Golf Club**
- **HASU**, world-class Japanese restaurant
- Entry-level rooms from **60 m²**



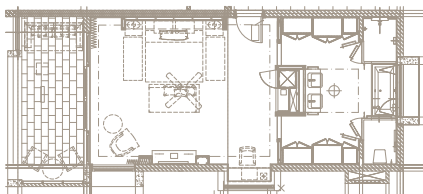
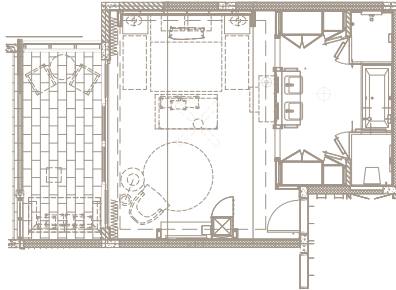


ACCOMMODATION

Junior Suite - 60 m²

Available on either the ground floor or first floor, this suite provides king-size or twin beds and a private terrace or balcony. Connecting rooms are available on request.

Maximum capacity: 3 adults or 2 adults & 2 teens (or 2 children)



Junior Suite Premium - 65 m²

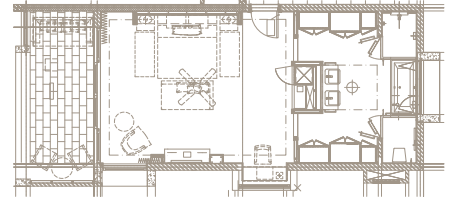
These guaranteed ground-floor suites provide king-size or twin beds and a private terrace. Connecting rooms are available on request.

Maximum capacity: 3 adults or 2 adults & 2 teens (or 2 children)

Junior Suite Beachfront - 65 m²

Available on either the ground floor or first floor, this suite provides king-size or twin beds and a private terrace or balcony, with direct access to the beach. Connecting rooms are available on request.

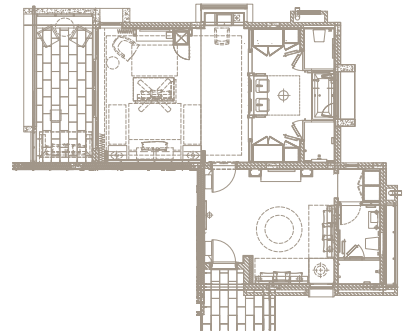
Maximum capacity: 3 adults or 2 adults & 2 teens (or 2 children)



Family Suite - 85 m²

Located on either the ground floor or first floor, this suite provides king-size or twin beds and a private terrace or balcony. The suite also comes with a living area with a sofa bed.

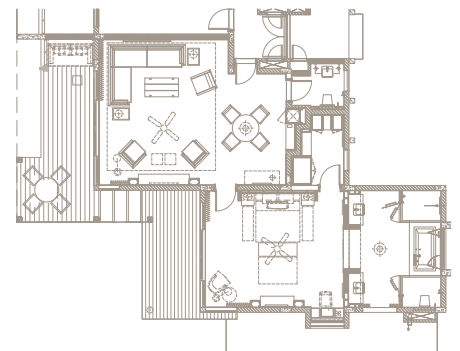
Maximum capacity: 2 adults & 3 children or 2 adults & 2 teens



Long Beach Suite - 135 m²

The ground-floor suite comes with a king-size bed and a walk-in wardrobe. Guests can enjoy a private terrace, providing direct beach access with a private cocoon.

Maximum capacity: 2 adults & 2 teens (2 children)



All the rooms are equipped with the following facilities:

- Individually controlled air-conditioning.
- Bathroom with separate bath, shower and toilets.
- Bathroom amenities, hairdryer, bathrobe and slippers.
- IPTV system with hotel information.
- Mini-bar with tea and coffee facilities.
- Electronic safe.
- 220 Volts international and USB port sockets.

Rooms & Suites Policy

- Check-in time is at 2 pm and check-out is at noon.
- Early check-in and late check-out options are offered at an additional cost (upon availability).
- Junior Suites for people with reduced mobility are available upon request.
- 24/7 room service (tray charge applies).
- Laundry, dry-cleaning and pressing service (at a cost).



RESTAURANTS & BARS

Dress code in restaurants & bars:
Resort chic in the evening.

Meal Plan	BREAKFAST			LUNCH		DINNER		
	HB	FB	AI	FB	AI	HB	FB	AI
Le Marché Main restaurant serving an array of international dishes	7 am – 10 am					6.30 pm – 10 pm		
	✓	✓	✓			✓	✓	✓
Sapori A la carte Italian restaurant				12.30 pm – 3 pm		6.30 pm – 10 pm		
				★	★	★	★	★
Tides A la carte beach restaurant				12 pm – 3 pm		6.30 pm – 10 pm		
				★	★	★	★	★
Chopsticks A la carte Asian-inspired restaurant						6.30 pm – 10 pm		
						★	★	★
Hasu A la carte gastronomic Japanese restaurant (as from 12 years old)						6.30 pm – 10 pm		
						With supplement	With supplement	With supplement
Beach & Pool Service				11 am – 5 pm				
				★	★			

✓ Included ★ Selected items HB: Half-Board | FB: Full-Board | AI: All-Inclusive

BARS



Shores Bar

Open from 11 am to 11 pm
Serving an international selection of drinks with an accent on tropical cocktails.



Tides Pool & Beach Bar

Open from 11 am to 11 pm
Serving a great selection of drinks by the pool.

All-Inclusive Package Additional Inclusions

Mini bar (One refill per day)

- Soft drinks, juices, water and beers.

Beverages

- Choice of imported wines (red/white/rosé) and sparkling wines.
- Choice of locally bottled and selected imported spirits (whisky, gin, vodka, martini, brandy, rums and liquors).
- Choice of cocktails, local beers, mineral water, soft drinks & milkshakes.

Conditions

- The All-Inclusive package starts at check-in (2 pm) and ends at check-out (noon).
- Drinks/food not indicated as part of 'AI' (as per menu card) are not included.
- For personal consumption only – signature is required for control purposes for all consumptions.
- Compulsory "All-Inclusive Day-Pass" fee payable at reception for any visitor wishing to join in-house guests.
- Lunch snack boxes for excursions available upon request (24 hours' notice required). Picnic-packed lunches are not allowed at Ile aux Cerfs Golf Club.
- All-Inclusive does not apply for Ile aux Cerfs and Ambre.
- For groups and incentives, refer to our separate "Sunlife Group All-Inclusive Fact Sheet".

SPORTS, LEISURE & WELLNESS



GOLF

Ile aux Cerfs

Ile aux Cerfs is a picturesque island spread over 87 hectares of untouched land off the east coast of Mauritius.

Free daily golf initiation at 11 am (upon request).

Applicable for golfers only:

- Free and unlimited green fees at Ile aux Cerfs Golf Club, including complimentary land and boat transfers at Pointe Maurice Jetty (within operating hours).
- Golfers on All-Inclusive basis can enjoy a 2-course lunch including soft drink at the Clubhouse, Langer's Bar & Grill.

Anahita

- Free and unlimited green fees at Anahita Golf Club, including free return land shuttle transfers.

ACTIVITIES

FREE

- 216 m² gym
- Fitness activities (as per weekly programme)
- Wall climbing
- Indoor games
- Beach volley, football, badminton, table tennis, bocci ball and beach tennis
- 3 tennis courts (new tennis balls at extra charge)
- 4 pools (including a lap pool and a kid's pool)
- Unlimited free green fees at Ile aux Cerfs and Anahita
- Access to Ile aux Cerfs Leisure Island

EXTRA COST

- Padel court
- Pickleball court
- Tennis and padel lessons
- Archery and archery classes
- Discovery bike tours
- Bicycle and E-bike rental
- Spice Spoon cultural market tour and cooking experience
- Personal fitness training
- Yoga classes

WATER ACTIVITIES *

- Windsurf
- Stand-up paddle
- Giant stand-up paddle
- Pedal boat
- Single & double kayak
- Hobie cat
- Glass bottom boat
- Snorkelling
- Aqua gym
- Water polo

- Water ski**
- Sunrise kayak**

*All free water activities are on a first-come, first-served basis and those with a supplement require a 24-hour booking made directly at the Boat House (opening hours: 9 am – 5 pm)

**Off property: booking and payment should be done directly with our partners.

SUNLIFE KIDS CLUB

The Sunlife Kids Club welcomes children between 2 and 11 years old and provides exciting and creative daily fun programmes with age-appropriate activities, facilities and amenities.

Children of 2 to 3 years old must be accompanied by a parent or a babysitter if they are not potty-trained.

Professionally trained nannies are available on request at an extra charge.

Opening hours: 9.30 am to 10 pm
(closed between 5 pm and 6 pm)



SUNLIFE TEENS CLUB

The Sunlife Teens Club welcomes 12 to 17-year-olds who can enjoy a special sports and recreation programme.

Opening hours: 10 am to 10 pm



COME ALIVE COLLECTION

Sunlife launches the Come Alive Collection, a series of experiences and activities inviting their guests to Come Alive. Discover the Come Alive Experience at Long Beach with the Biodiversity Trail, Transforming the Piazza, Brilliant Bocce and much more.



GLOW

Sunlife's authentic approach to well-being comes to life in three wellness pillars: Elemental Energy, Nurturing Energy, and Creative Energy. Discover our creative journeys in our resorts.

Our spa, GLOW, offers tailored, holistic treatments with an authentic Mauritian touch. We offer an expanded menu of timeless holistic wellness practices, including energy work by the sea, Western and Eastern practices such as Ayurveda-based massage, time-honoured bathing rituals, and a wide selection of massage therapies.

- 9 single and 3 double treatment rooms (including one with a Japanese bath)
- 51 m² hammam
- Outdoor spa pavilion immersed in a tropical garden
- Beauty parlour with a hair salon, manicure and pedicure facilities

Opening hours: from 9 am to 7 pm

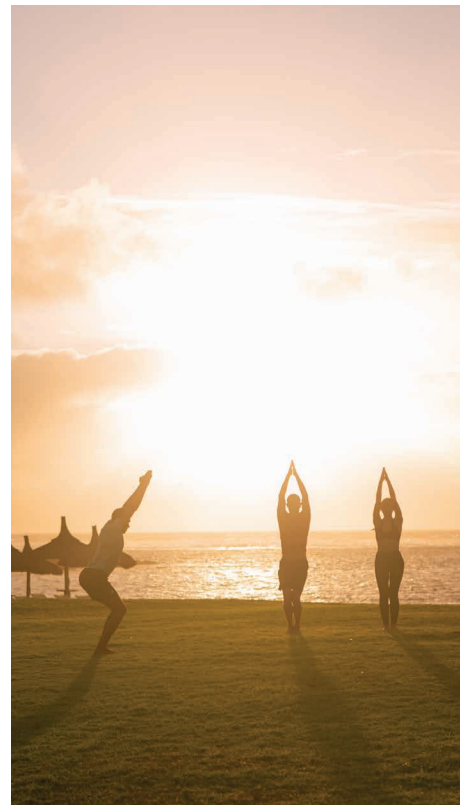
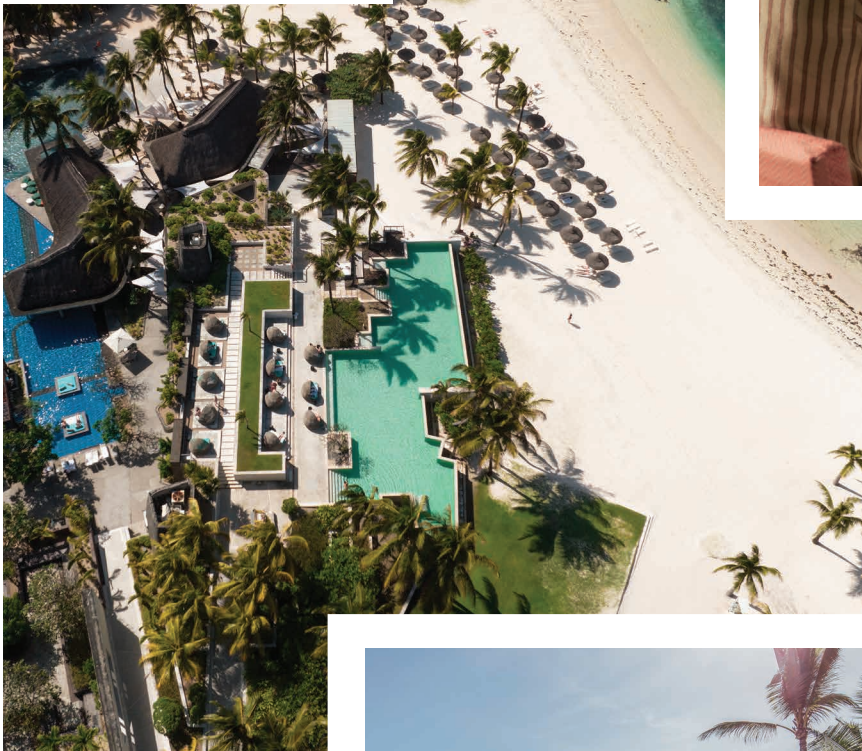


Practical Information

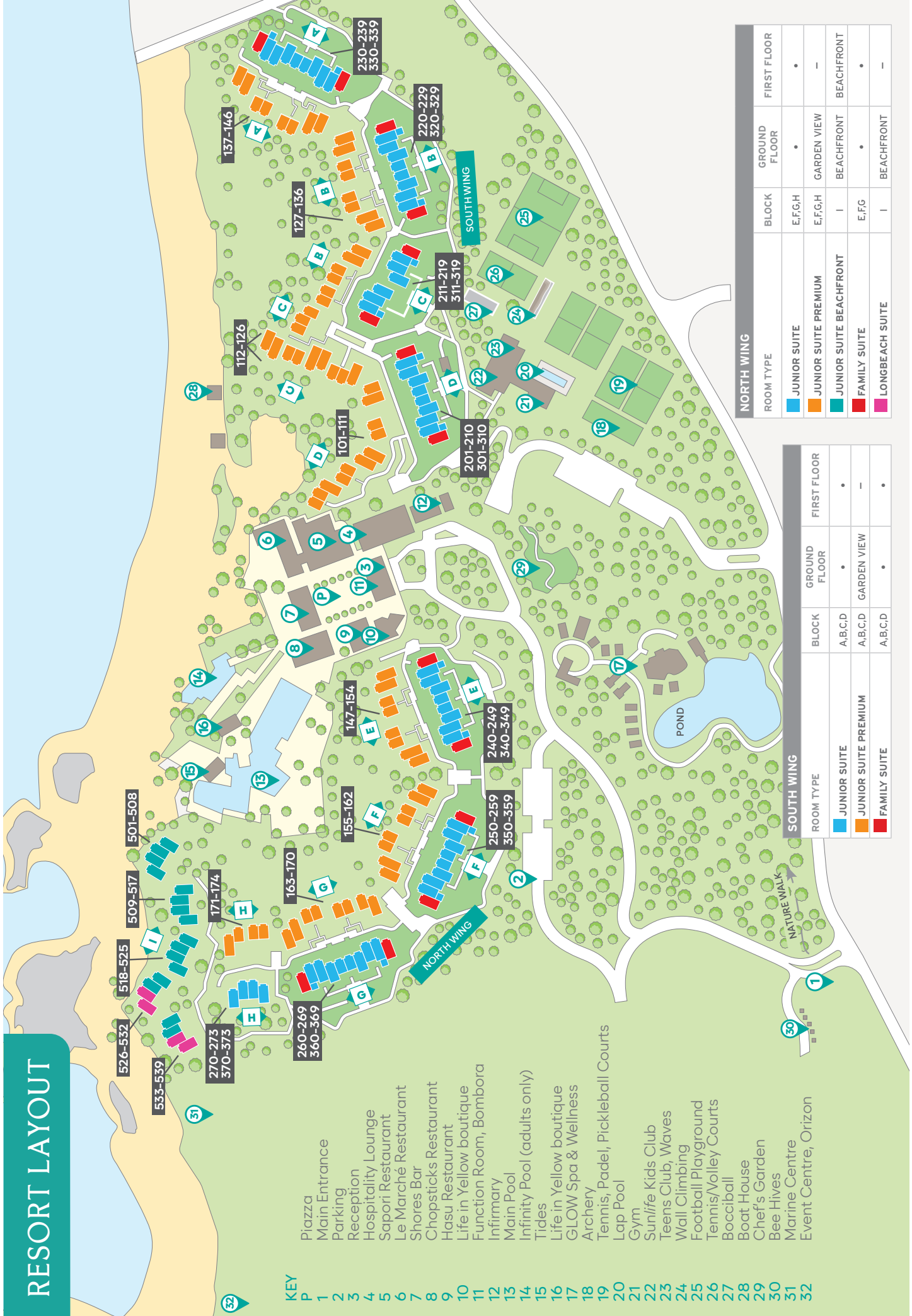
- Free Wi-Fi in rooms and public areas.
- Life in Yellow boutiques: open every day from 9 am to 7 pm.
- A fully equipped conference space for up to 230 delegates.
- On-site infirmary.
- Parking & taxi facilities.
- Foreign currency exchange facilities at the reception.
- Credit cards accepted: Visa, MasterCard, American Express and Maestro (local).

Terms & Conditions

- Families and guests sharing rooms or travelling as a party must book the same package (also applies to children).
- No compensation in cash or any kind will be offered for non-consumed items.
- Guests residing at the hotel are requested to inform reception when expecting a visit so that prior arrangements can be made.
- The hotel reserves the right to close any restaurant for / or during special events and due to bad weather conditions.
- Changes in selections, hours, accessibility or availability are possible at any time without prior notice.
- We reserve the right to increase our rates in the event of increased government taxation.



RESORT LAYOUT



KEY

- P Piazza
- 1 Main Entrance
- 2 Parking
- 3 Reception
- 4 Hospitality Lounge
- 5 Sapori Restaurant
- 6 Le Marché Restaurant
- 7 Shores Bar
- 8 Chopsticks Restaurant
- 9 Hasu Restaurant
- 10 Life in Yellow boutique
- 11 Function Room, Bombara
- 12 Infirmary
- 13 Main Pool
- 14 Infinity Pool (adults only)
- 15 Tides
- 16 Life in Yellow boutique
- 17 GLOW Spa & Wellness
- 18 Archery
- 19 Tennis, Padel, Pickleball Courts
- 20 Lap Pool
- 21 Gym
- 22 Sunlife Kids Club
- 23 Teens Club, Waves
- 24 Wall Climbing
- 25 Football Playground
- 26 Tennis/Volley Courts
- 27 Bocciball
- 28 Boat House
- 29 Chef's Garden
- 30 Bee Hives
- 31 Marine Centre
- 32 Event Centre, Orizon

NORTH WING				
ROOM TYPE	BLOCK	GROUND FLOOR	FIRST FLOOR	
JUNIOR SUITE	E,F,G,H	•	•	
JUNIOR SUITE PREMIUM	E,F,G,H	GARDEN VIEW		
JUNIOR SUITE BEACHFRONT	I	BEACHFRONT	BEACHFRONT	
FAMILY SUITE	E,F,G	•	•	
LONGBEACH SUITE	I	BEACHFRONT		

SOUTH WING				
ROOM TYPE	BLOCK	GROUND FLOOR	FIRST FLOOR	
JUNIOR SUITE	A,B,C,D	•	•	
JUNIOR SUITE PREMIUM	A,B,C,D	GARDEN VIEW		
FAMILY SUITE	A,B,C,D	•	•	